



Item No. _____
 Project _____
 Quantity _____

Electric, Fryer [Counter, Cabinet, Range-Match] Model: 130F[M,BASE-M,EXT36]



Model 130F-BASE-M shown

130FM MARINE SHORT/BID SPECIFICATION

Fryer shall be a **LANG Manufacturing Marine Model 130F**, a 15" wide counter top electric heated unit with 12-kW power input; 30-lb. shortening capacity and 68 lbs/hr frozen fries production capacity; two half-size baskets with manual basket lifts; all stainless steel tank and exterior; SOLAS compliant safety test & shutdown system.

MARINE PRODUCT WARRANTY

One year, parts & labor. (Labor in U.S. only)
 Fry pot is gauranteed to never leak.

MARINE CONSTRUCTION FEATURES

- One piece heavy duty 430 Series stainless steel exterior, with attractive No. 4 finish
- Enclosed cabinet base with door (range and floor models only)
- Stainless steel fry kettle
- 12-kW [total] rod type low watt density heating elements
- Two frying baskets with manual basket lift system
- Front mounted oil drain ball valve
- 4" adjustable bolt down legs on counter model. 6" adjustable bolt down legs on floor and range model

PERFORMANCE FEATURES

- Hatchable design allows movement through 26" X 66" watertight hatch
- 68 lbs./hr of frozen fries production, in a space saving 15" wide unit
- Kettle and element "cool zone" eliminate carbon build-up
- Low watt density heating elements provide even heating and extend shortening life
- Heating elements hinge up and out of kettle for easy cleaning
- Enclosed cabinet base provides added storage (range and floor models only)
- R-28SM Model provides an attractive, integrated battery look with Lang 36" Marine Ranges

CONTROL PACKAGE

- Power ON-OFF switch
- 100 to 400°F Thermostat
- SOLAS compliant safety test & shutdown system
- POWER, HEAT & OVER-TEMP indicator lights

PERFORMANCE GUIDE

Power Input	12-kW
Shortening Capacity	30 lbs.
Preheat Time [to 350°F]	7 minutes
Frozen Fries Production	68 lbs./hr





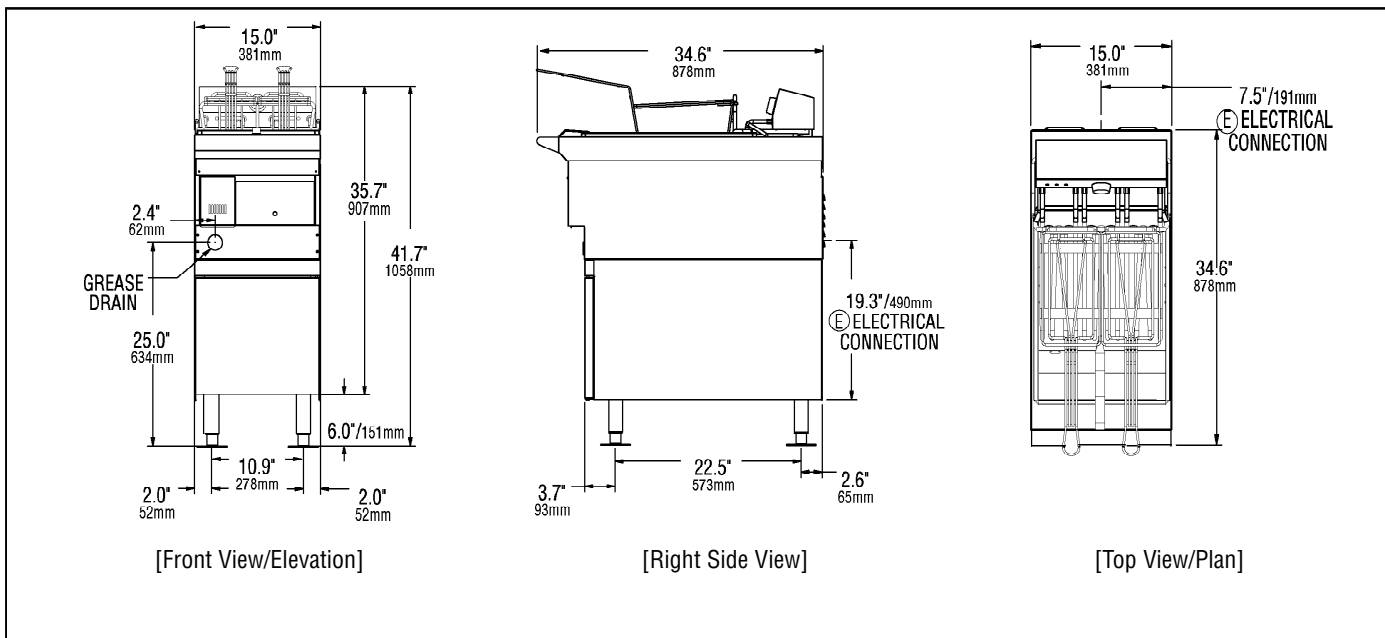
Electric, Fryer [Counter, Cabinet, Range-Match] Model: 130F[M, BASE-M, EXT36]

MARINE INSTALLATION REQUIREMENTS

- (E) Single 208V or 240V, 3-phase, or optional 440V or 480V, 3-phase electrical connection (440 and 480 Volt standard)
- Consult marine codes for installation requirements
- 130FM: Power connection from rear

MARINE OPTIONS & ACCESSORIES [All models unless indicated]

- Full-size basket
- Additional half-size baskets [two provided]
- 4" legs with adjustable bolt-down flanges
- Stainless steel smother cover
- Quick disconnect grease drain pipe



Model	Height x Width x Depth (Not including legs) 20.6" x 15.0" x 34.6" 524mm x 381mm x 878mm	Clearance from combustible surface Sides: 0" Back: 0"	Weight		Freight Class 85
			Actual 70 lbs. 32 kg	Shipping 120 lbs. 55 kg	
130FM					

Model	Volts AC - Hz	Total kW	Amps - Three Phase	Amps - Single Phase
130FM	208 - 50/60	12.0	33.3	N/A
	240 - 50/60	12.0	28.9	N/A
	480 - 50/60	12.0	14.4	N/A

Due to continuous improvements, specifications subject to change without notice.



Sheet No. LMSP-F1 (rev. 07/07)