



Model SG Tube Fired, Gas Fryer - With SoloFilter



(SG18 SoloFilter with optional I12 computer)

STANDARD ACCESSORIES

- Choice of basket options
 - Two nickel-plated, oblong, wire mesh baskets
 - One nickel-plated, square, wire mesh basket
- Built-in filtration system with 3" (7.6 cm) drain line
- One nickel-plated tube rack
- One drain line clean-out rod
- Fryer cleaner sample
- Rear gas connection
- Manual gas shutoff
- 1 1/4" (3.2 cm) full port drain valve
- Built-in integrated flue deflector
- Removable basket hanger for easy cleaning
- 10" (25.4 cm) adjustable legs front, 10" (25.4 cm) fixed casters rear.
- Cabinet - stainless steel front, door, and sides
- Tank - stainless steel

AVAILABLE OPTIONS

- Stainless steel back
- Basket lift
- Solid state thermostat**
- Digital controller**
- I12 Intellifry computer controller**
- Triple baskets
- Tank cover
- Back-up thermostat (for use with digital or I12 control)

*Only available with digital or computer controls

**Includes matchless ignition, melt cycle, and drain valve interlock switch.

Project _____

Item No. _____

Quantity _____

STANDARD SPECIFICATIONS

CONSTRUCTION

- Welded tank with an extra smooth peened finish ensures easy cleaning.
- Long-lasting, high-temperature alloy stainless steel heat baffles are mounted in the heat exchanger tubes to provide maximum heating and combustion efficiency.
- Standing pilot light design provides a ready flame when heat is required.
- Stainless steel front, door, side, and splashback.
- Heavy duty 3/16" (.48 cm) door hinge.

CONTROLS

- Millivolt thermostat maintains selected temperature automatically between 200°F (93°C) and 400°F (190°C-CE).
 - Integrated gas control valve acts as a manual and pilot valve, automatic pilot valve, gas filter, pressure regulator, and automatic main valve.
 - Gas control valve prevents gas flow to the main burner until pilot is established and shuts off all gas flow automatically if the pilot flame goes out.
 - Temperature limit switch safely shuts off all gas flow if the fryer temperature exceeds the upper limit.
 - New Solstice burner/baffle design.***
 - Increases cooking production.
 - Lowers flue temperature.
 - Improves working environment.
 - Generates more production per BTU.
- ***Compared to previous models.

OPERATIONS

Front 1 1/4" (3.2 cm) full port drain for quick draining.
10" (25.4 cm) clearance allows for ease of cleaning.

APPROVALS

- CSA Certified (AGA, CGA)
- NSF Listed
- MEA Approved



Pitco Frialator, Inc., P.O. Box 501, Concord, NH 03302-0501 • 509 Route 3A, Bow, NH 03304, USA

(800) 258-3708 • (603) 225-6684 • FAX (603) 225-8472

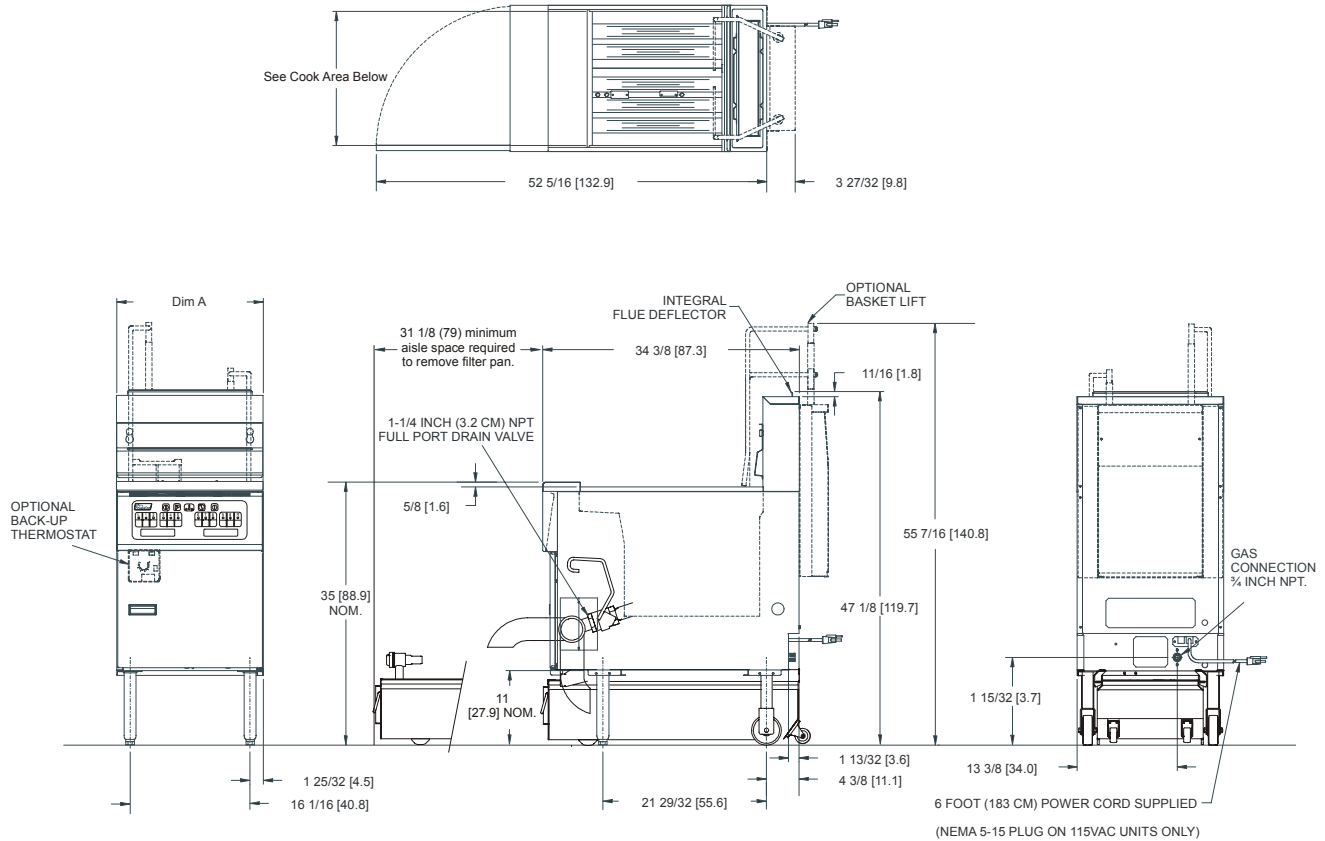


L10-152 Rev 1 (03/03)



Model SG Tube Fired, Gas Fryer - With SoloFilter

Model SG Tube Fired, Gas Fryer - With SoloFilter



INCHES [CENTIMETERS]

Gas Type	Store Manifold Pressure*	Burner Manifold	*Recommended Minimum
Natural Gas	7" W.C. / 17.4 mbars / 1.75 kPa	4" W.C. / 10 mbars / 1 kPa	Check plumbing/gas codes for proper gas supply line sizing.
L.P. Gas	13" W.C. / 32.4 mbars / 3.25 kPa	10" W.C. / 25 mbars / 2.5 kPa	
Clearance Information	Fryer Front	Fryer Sides, Rear, Bottom to any combustible material	Fryer Flue Area
All Models	30" (76.2 cm) minimum	6" (15.2 cm) Do not Curb Mount	Do not block or restrict flue gasses from flowing into ventilation system.

ELECTRICAL REQUIREMENTS

Options		Voltage / Phase / Frequency	Amps	Additional Amps for Filter Heater	Number of Power cords	Power Cord Locations
Filter	8.0 GPM (30.3 LPM) 1/3 HP	115 / 1 / 60	7	3	1	Back Left
	6.7 GPM (25.4 LPM) 1/3 HP	220-230-240 / 1 / 50	3.6	1.5		
Fryer	Millivolt controls	Not Required	0	N/A		
	Upgrade Controls: Solid state, Digital, Computer, Basket Lift	115 / 1 / 60 220-230-240 / 1 / 50	1.7 0.9	N/A N/A		

GAS REQUIREMENTS

Models	"A" Dim	Cook Area	Oil Capacity	Gas Input / Hour	Shipping Weight / Unit	Shipping Cube	Shipping Dimensions H x W x L
SG14	15-5/8 in 39.7 cm	14 x 14 x 4 in 35.6 x 35.6 x 10.2 cm	40-50 lbs 18-23 kg	110,000 BTU 33 kW (CE) / 119 mJ (AuGA)	200 lbs 91kg	33 ft ³ .93 m ³	58 x 22½ x 43½ in 147.3 x 57.2 x 110.5 cm
SG14R	15-5/8 in 39.7 cm	14 x 14 x 4 in 35.6 x 35.6 x 10.2 cm	40-50 lbs 18-23 kg	122,000 BTU 36 kW (CE) / 129 mJ (AuGA)	208 lbs 94kg	33 ft ³ .93 m ³	58 x 22½ x 43½ in 147.3 x 57.2 x 110.5 cm
SG18	19-5/8 in 49.8 cm	18 x 18 x 4 ~ 4 ¼ in 45.7 x 45.7 x 10.2 ~ 12.1 cm	70-90 lbs 32-41 kg	140,000 BTU 40 kW (CE) / 145 mJ (AuGA)	226 lbs 103 kg	33 ft ³ .93 m ³	58 x 22½ x 43½ in 147.3 x 57.2 x 110.5 cm
SoloFilter	N/A	N/A	SG18 -55 lbs(25 kg) SG14,R,T-95 lbs(43 kg)	N/A	100 lbs / 46 kg	N/A Ships with fryer	N/A

SHORT FORM SPECIFICATION

Provide Pitco FD (Filter Drawer) Solstice filter system. Drain line shall be 3" (7.6 cm) diameter with a swivel drain spout for oil disposal. Filter pickup assembly shall have handles and utilize envelope type filter paper with 475 sq in (3,065 sq. cm.) of filter area for model SG18 and 310 sq in (2,000 sq cm) of filter area for model SG14, SG14R and SG14T. Filter pump shall pump 8 GPM, 60 Hz (25.4 LPM, 50 Hz). Filter piping to be self-aligning for easy assembly. Filter lid shall be attached to the cabinet for ease of use. Filter pan shall have front stabilizer legs and rear rigid casters for portability. Provide accessories as follows.

TYPICAL APPLICATIONS

Space saving filter capable of filtering heavy to light breaded products fast and conveniently.



Pitco Frialator, Inc.,

L10-152 Rev 1 (03/03)

P.O. Box 501, Concord, NH 03302-0501 • 509 Route 3A, Bow, NH 03304, USA
(800) 258-3708 • (603) 225-6684 • FAX (603) 225-8472

Specifications subject to change without notice

.Printed in U.S.A